

PRECIOSA

# Fine Jewelry Stones

Product Catalogue

Bohemian *crafted* since 1548

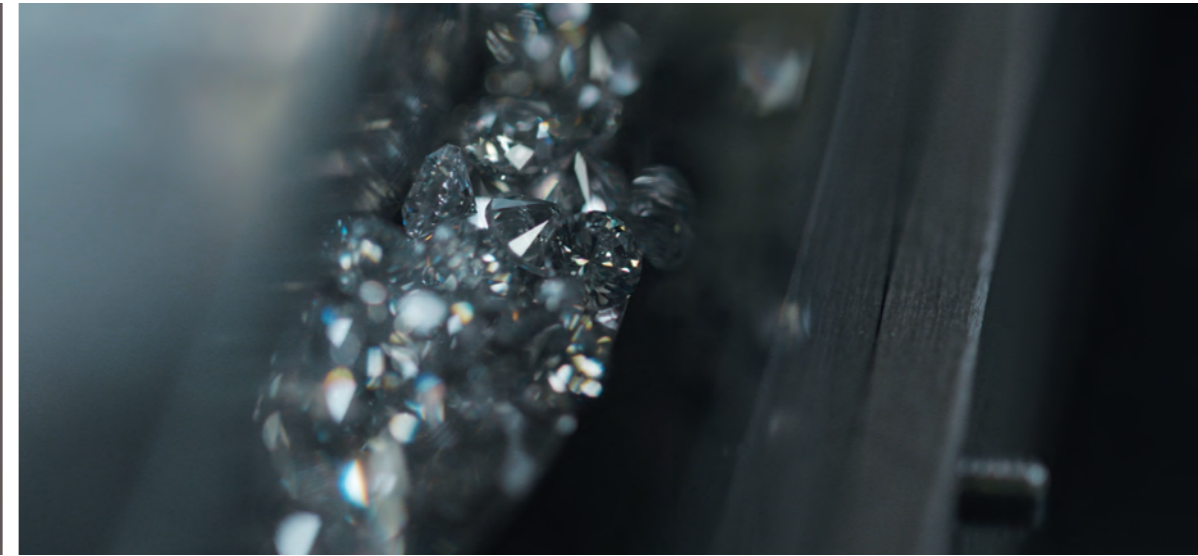
JULY 2022

# Fine Jewelry Stones

Reliably crafted in a small village of around 3,600 inhabitants, Preciosa fine jewelry stones are the exquisite culmination of Bohemia's breathtaking beauty and abundant natural resources. Spanning half a millennium since the beginning of Habsburg rule, the name "Bohemia" has served as a symbol of pristine quality and the benchmark of Europe's gem-cutting, polishing and engraving capabilities. Behind every jewelry stone is a story, and ours begins right here.

*from the*  
of Heart  
Europe

# The Preciosa Group



A global leader in luxury goods manufactured from crystal, the Preciosa Group stands upon centuries of glassmaking tradition and innovation. From the world's smallest faceted flatback stone to our cutting-edge, bespoke lighting installations, Preciosa looks to our own unique heritage to draw inspiration for the future of responsibly crafted Bohemian crystal. Together, the Group operates regional offices across Europe, North America and Asia and melts 40 tons of glass every day.



Preciosa's main campus and head offices are located in Jablonec nad Nisou, a small town in the North Bohemian region of the Czech Republic. Archaic Czech for "Little Apple Tree on the Nisa" (Nisa being the river that flows through town), Jablonec nad Nisou received its official township status in 1866 from Emperor Franz Joseph of Austria-Hungary in recognition of the town's collective success in glassmaking and jewelry production.

Today Preciosa operates 10 additional production sites throughout North Bohemia and two corporate offices in the nation's capital of Prague. In 2016 the Group opened a high-end showroom in Prague's medieval Old Town.





Shine  
Responsibly!



## Quality Guarantee

Preciosa strictly adheres to a comprehensive program of environmentally responsible business practices and manufacturing procedures that comply with all major EU standards and worldwide industry legislation.

All Preciosa products are 100% made in the Czech Republic.

## Certifications

Preciosa's premium quality MAXIMA line meets the following certifications:

**ASTM F2923**

Standard Specification for Consumer Product Safety for Children's Jewelry

**ASTM F963**

Standard Consumer Safety Specification for Toy Safety

**CPSIA**

Consumer Product Safety Improvement Act

**SAFETY OF TOYS**

Heavy metal migration limits according to Directive 2009/48/EC

**OEKO-TEX STANDARD 100**

Product Class II

**REACH**

Registration, Evaluation, Authorization and Restriction of Chemical Substances

**ROHS**

Restriction on Use of Hazardous Substances

# Contents



<b>10</b>	<b>Basic Information</b>
<b>20</b>	<b>Round Cuts</b>
<b>38</b>	<b>Fancy Cuts</b>
<b>60</b>	<b>Special Cuts</b>
<b>66</b>	<b>Flatback Cuts</b>

## Basic Information

### Cubic Zirconia

suitable for lost-wax casting

The man-made answer to natural diamonds, cubic zirconia boasts perfect structure, extreme hardness and incredible light dispersion. Made with only the highest quality, inclusion-free rough, Preciosa Cubic Zirconia stones are individually polished to achieve an even brighter fire than their naturally occurring counterpart.

Chemical composition:  $ZrO_2 + Y_2 O_3$

Structure: cubic

Hardness: 8.5° Mohs

Density: 5.9 g/cm<sup>3</sup>

Refractive index: 2.17

Heat resistance: 600 °C/1,112 °F

Heat resistance of White cubic zirconia: 2,000 °C/ 3,632° F

Heat resistance of Black cubic zirconia: 300 °C/ 572 °F

### Synthetic Spinel

suitable for lost-wax casting

with a slightly higher refractive index than its natural counterpart, synthetic spinel is one of the most shiny and durable imitation gemstones. Preciosa Synthetic Spinel comes in three shades of blue, the rarest color of naturally occurring spinel, and in a variety of our exquisite round and fancy cuts.

Chemical composition:  $MgAl_2 O_4$

Structure: cubic

Hardness: 8° Mohs

Density: 3.6g/cm<sup>3</sup>

Refractive index: 1.5-1.7

Heat resistance: 1,100 °C/2,012 °F

### Synthetic Corundum

suitable for lost-wax casting

Second only to diamonds in hardness and known for its intense color, red corundum is known by its more common name: ruby. Available in two captivating shades of red, Preciosa Synthetic Corundum is made from only the finest raw ingredients and comes in a selection of our most popular round and fancy cuts.

Chemical composition:  $Al_2 O_3$

Structure: trigonal

Hardness: 9° Mohs

Density: 3.9g/cm<sup>3</sup>

Refractive index: 1.7

Heat resistance: 1,700 °C/3,092 °F

### Genuine Red Garnet

suitable for lost-wax casting

Mined exclusively in the Czech Republic, these semi-precious gemstones range in shade from fiery crimson to blood red and are known for their exceptional ability to retain color over time. Preciosa Genuine Red Garnets come in a selection of our classic round cuts and are as timeless as they are elegant.

Chemical composition:  $Mg_3 Al_2 (SiO_4)_3$

Structure: cubic

Hardness: 6.5-7.5° Mohs

Refractive index: 1.72-1.94

Heat resistance: 1,400 °C/2,552 °F

### Genuine Black Spinel

suitable for lost-wax casting

Among the hardest and most durable of gemstones, black spinel is widely regarded as the premium opaque black gemstone by many of the world's top jewelers. Preciosa Genuine Black Spinel comes in our most popular round cuts and is the perfect for intricate designs.

Chemical composition:  $MgO(Fe, Al)_2 O_3$

Structure: Cubic

Hardness: 7.5-8° Mohs

Density: 3.8g/cm<sup>3</sup>

Heat resistance: 1,200 °C/2,192 °F

### Genuine Marcasite

not suitable for lost-wax casting

With its silvery, gun-metal hue, marcasite is equal parts eye-catching and delicate. Available in three cuts: Rose, Square and Baguette, Preciosa Genuine Marcasite provides the perfect touch of sparkle to ornate or vintage inspired pieces.

Chemical composition:  $FeS_2$  (Pyrite)

Structure: cubic

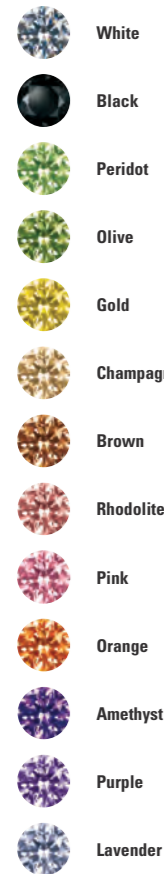
Hardness: 6-6.5° Mohs

Density: 4.9-5.2g/cm<sup>3</sup>

Heat resistance: 200 °C/392 °F

## Colors

### Cubic Zirconia



## PCT Colors\*

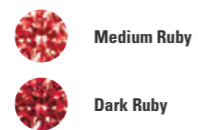
### Cubic Zirconia



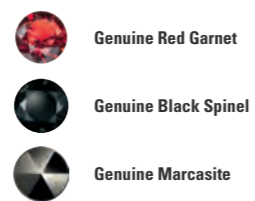
### Synthetic Spinel



### Synthetic Corundum

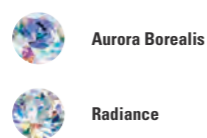


### Gemstones



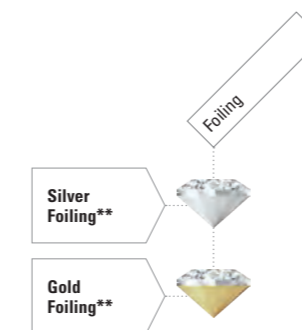
## Coatings

### Cubic Zirconia



## Foiling

Foiling is the application of a reflective layer on the underside of the stone to create maximum brilliance. Foiled stones are perfectly suitable for gluing because they do not lose their optical characteristics.



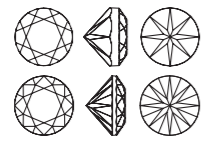
### NOTE:

\* Preciosa's patented Permanent Color Treatment (PCT) technology opens up a range of exciting new possibilities in the coloration and durability of cubic zirconia. Developed according to the latest discoveries in material science, our innovative color application process creates a uniform, permanent colored layer across the stone's pavilion. Our PCT stones are able to sustain cast-in-place production techniques and cleaning processes such as ultrasound, magnetic pin and acid baths. Our selection of PCT colors are part of our regular assortment of colors and coatings for cubic zirconia.

\*\* Available for all colors and materials

# Fine Jewelry Stones

## Round Cuts



"The Alpha" Round Brilliant

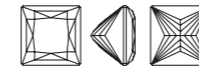


Round Simple

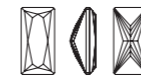


100 Faceted

## Fancy Cuts



Square Princess



Baguette Princess



Baguette Step



Tapered Baguette



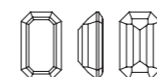
Marquise Diamond



Pear Diamond



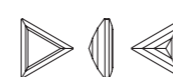
Oval Diamond



Octagon Step



Heart



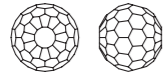
Triangle Step



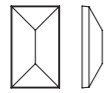
Cushion



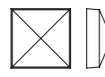
## Special Cuts



Bead 74



Marcasite Baguette



Marcasite Square



Marcasite Rose

## Flatback Cuts



Cabochon



Rose Diamond

# Handling Advice

MATERIAL/Color	Potassium hydroxide 10%*	Sulphuric acid 96% 80°C*	Citric acid*	Lost-wax casting*	Vitrex pickle*	Sulphuric acid pickle*	Blackening*	Gold coloring*	Soft Soldering*	Silver Coating*	Gold plating*	Rhodium Coating	Machine grinding and polishing	Hard soldering*	Manual grinding and polishing	Hand-mounting	Bonding
<b>CUBIC ZIRCONIA</b>																	
White	●	●	●	●	●	●	●	●	●	●	●	●	●	●	●	●	●
Black	●	●	●	●	●	●	●	●	●	●	●	●	●	●	●	●	●
Peridot	●	●	●	●	●	●	●	●	●	●	●	●	●	●	●	●	●
Olive	●	●	●	●	●	●	●	●	●	●	●	●	●	●	●	●	●
Gold	●	●	●	●	●	●	●	●	●	●	●	●	●	●	●	●	●
Champagne	●	●	●	●	●	●	●	●	●	●	●	●	●	●	●	●	●
Brown	●	●	●	●	●	●	●	●	●	●	●	●	●	●	●	●	●
Rhodolite	●	●	●	●	●	●	●	●	●	●	●	●	●	●	●	●	●
Pink	●	●	●	●	●	●	●	●	●	●	●	●	●	●	●	●	●
Orange	●	●	●	●	●	●	●	●	●	●	●	●	●	●	●	●	●
Amethyst	●	●	●	●	●	●	●	●	●	●	●	●	●	●	●	●	●
Purple	●	●	●	●	●	●	●	●	●	●	●	●	●	●	●	●	●
Lavender	●	●	●	●	●	●	●	●	●	●	●	●	●	●	●	●	●
Vanilla Silk PCT	●	●	●	●	●	●	●	●	●	●	●	●	●	●	●	●	●
Golden Amber PCT	●	●	●	●	●	●	●	●	●	●	●	●	●	●	●	●	●
Ameretto PCT	●	●	●	●	●	●	●	●	●	●	●	●	●	●	●	●	●
Aurora Borealis	●	●	●	●	●	●	●	●	●	●	●	●	●	●	●	●	●
Radiance	●	●	●	●	●	●	●	●	●	●	●	●	●	●	●	●	●
<b>TREATED SURFACE</b>																	
Silver and Gold Foiling	●	●	●	●	●	●	●	●	●	●	●	●	●	●	●	●	●

MATERIAL/COLOR	Potassium hydroxide 10%*	Sulphuric acid 96% 80°C*	Citric acid*	Lost-wax casting*	Vitrex pickle*	Sulphuric acid pickle*	Blackening*	Gold coloring*	Soft Soldering*	Silver Coating*	Gold plating*	Rhodium Coating	Machine grinding and polishing	Hard soldering*	Manual grinding and polishing	Hand-mounting	Bonding
<b>SYNTHETIC SPINEL</b>																	
Aquamarine	●	●	●	●	●	●	●	●	●	●	●	●	●	●	●	●	●
Medium Blue	●	●	●	●	●	●	●	●	●	●	●	●	●	●	●	●	●
Dark Blue	●	●	●	●	●	●	●	●	●	●	●	●	●	●	●	●	●
<b>SYNTHETIC CORUNDUM</b>																	
Medium Ruby	●	●	●	●	●	●	●	●	●	●	●	●	●	●	●	●	●
Dark Ruby	●	●	●	●	●	●	●	●	●	●	●	●	●	●	●	●	●
<b>GENUINE GEMSTONES</b>																	
Genuine Black Spinel	●	●	●	●	●	●	●	●	●	●	●	●	●	●	●	●	●
Genuine Red Garnet	●	●	●	●	●	●	●	●	●	●	●	●	●	●	●	●	●
Genuine Marcasite	●	●	●	●	●	●	●	●	●	●	●	●	●	●	●	●	●

**KEY:**

- Suitable for use with treatment when standard parameters are met.
- Suitable for use with treatment when standard procedure is strictly adhered to; special attention should be paid to the parameters set by the machines and tools used within the procedure for best results. Lack of care may cause visible changes to the stone.
- Not suitable for use with this treatment.

**Preciosa is not responsible for any changes caused by improper handling of the stones.**

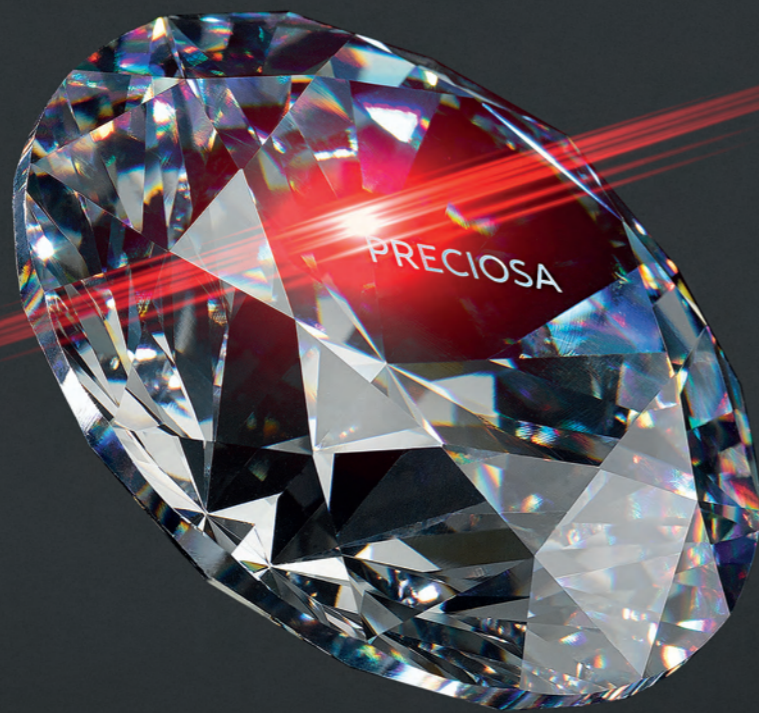
**\* TREATMENT DESCRIPTIONS:**

**Potassium hydroxide 10%** ... KOH.  
**Sulphuric acid 96% 80°C** ... H<sub>2</sub>SO<sub>4</sub>.  
**Citric acid** ... C<sub>6</sub>H<sub>8</sub>O<sub>7</sub>.  
**Lost-wax casting** ... Casting temperature 1,060 °C | Wax burnout: 2 hours at 700 °C.  
**Vitrex pickle** ... 12.5 Vol % NaHCO<sub>3</sub> | 10 minutes at 70 °C | Rinsed with H<sub>2</sub>O.  
**Sulphuric acid pickle** ... 20 Vol % H<sub>2</sub>SO<sub>4</sub> | 30 minutes at 60 °C | Rinsed with H<sub>2</sub>O.  
**Blackening** ... 1/3 K<sub>2</sub>CO<sub>3</sub>, 1/3 S, 1/3 H<sub>2</sub>O | Stones exposed to filtrate for 3 minutes at 50 °C | Rinsed with H<sub>2</sub>O.  
**Gold coloring** ... Color bath mix of 17.3% NaCl | 23% KNO<sub>3</sub>, 22.6% H<sub>2</sub>O, 25.6% HCl | Boiled in solution for 3 minutes | Rinsed with H<sub>2</sub>O.  
**Soft soldering** ... Soldering temperature 200 °C.  
**Silver coating** ... Composition of bath – K[Ag(CN)<sub>2</sub>], KCN | Chemical additives generating the brilliancy. Stones exposed to dipping in the bath for 3.5 minutes at the temperature of 26 °C in circular movement of silvered goods.  
**Gold plating** ... Composition of bath – K[Au(CN)<sub>2</sub>], KCN, Cu, Pd. | Stones exposed to dipping in the bath for 30 seconds to 4 minutes at the temperature from 25 °C to 55 °C in circular movement of gilded goods.  
**Hard soldering** ... Soldering temperature 600 °C.



# Round Cuts

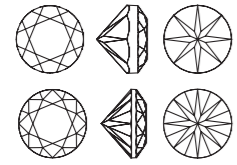
Relied on by the world's finest jewelers, watchmakers and high-end eyewear brands, Preciosa's round-cut cubic zirconia and fine jewelry stones are the global standard for precision and brilliance. Meticulously cut to a size variation tolerance of  $\pm 0.02\text{mm}$ , our round cuts boast a guaranteed uniform fit and come in a dazzling array of colors and coatings available exclusively from Preciosa.



Meet  
The  
ALPHA

A paragon of geometrical precision, our re-imagined Round Brilliant cut achieves the most ideal ratio of brilliance, scintillation and fire ever exemplified by round-cut cubic zirconia. Named after the first letter in the Greek alphabet, the Alpha cut pays tribute to those ancient Greek mathematicians credited with the invention of geometry, upon whose intellect and pioneering spirit we so heavily rely.

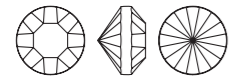
## Round Cuts



### "The Alpha" Round Brilliant

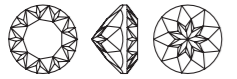
mm 0.70, 0.75, 0.80, 0.85, 0.90, 0.95, 1.00, 1.05, 1.10, 1.15, 1.20, 1.25, 1.30, 1.35, 1.40, 1.45,

mm 1.50, 1.55, 1.60, 1.65, 1.70, 1.75, 1.80, 1.85, 1.90, 1.95, 2.00, 2.05, 2.10, 2.15, 2.20, 2.25, 2.30, 2.35, 2.40, 2.45, 2.50, 2.55, 2.60, 2.65, 2.70, 2.75, 2.80, 2.85, 2.90, 2.95, 3.00, 3.05, 3.10, 3.15, 3.20, 3.25, 3.30, 3.40, 3.50, 3.60, 3.70, 3.75, 3.80, 3.90, 4.00, 4.25, 4.50, 4.75, 5.00, 5.25, 5.50, 5.75, 6.00, 6.25, 6.50, 6.75, 7.00, 7.25, 7.50, 7.75, 8.00



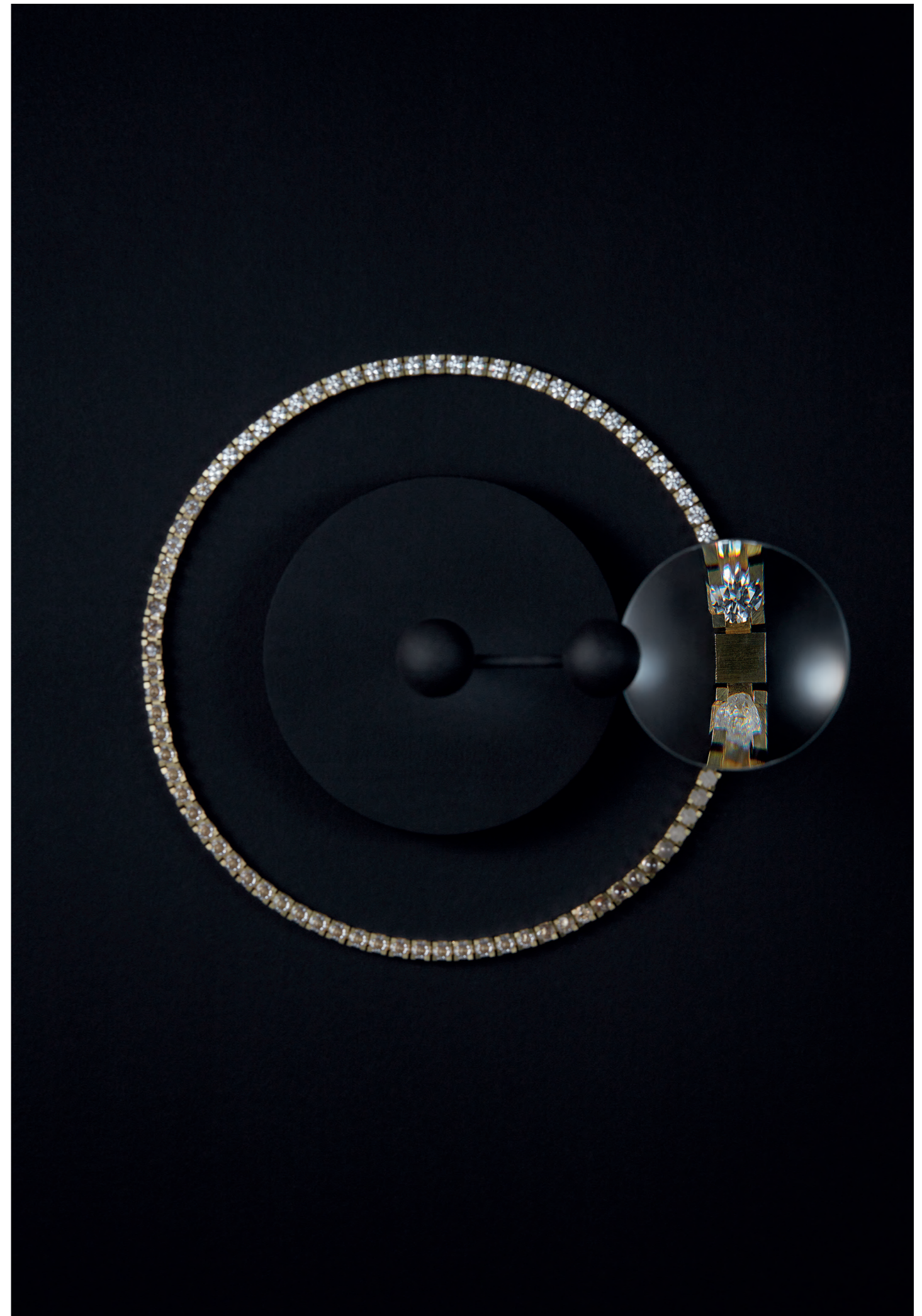
### Round Simple

mm 0.50, 0.60



### 100 Faceted

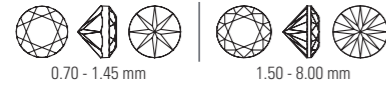
mm 2.00, 2.50, 3.00, 3.50, 4.00, 4.50, 5.00, 5.50, 6.00, 6.50, 7.00, 7.50, 8.00



# Round Cuts

**KEY:**  
 ● Standard portfolio item  
 ○ Item available upon request

## “The Alpha” Round Brilliant



Size	Cubic Zirconia									Cubic Zirconia									
	White	Black	Peridot	Olive	Gold	Champagne	Brown	Rhodolite	Pink	Orange	Amethyst	Purple	Lavender	Vanilla Silk PCT	Golden Amber PCT	Amaretto PCT	Aurora Borealis	Radiance	
0.70	●	●	●	●	●	●	●	●	●	●	●	●	●						
0.75	●	●	●	●	●	●	●	●	●	●	●	●	●						
0.80	●	●	●	●	●	●	●	●	●	●	●	●	●	●	●	●	●	●	
0.85	●	●	●	●	●	●	●	●	●	●	●	●	●						
0.90	●	●	●	●	●	●	●	●	●	●	●	●	●						
0.95	●	●	●	●	●	●	●	●	●	●	●	●	●						
1.00	●	●	●	●	●	●	●	●	●	●	●	●	●	●	●	●	●	●	
1.05	●	●	●	●	●	●	●	●	●	●	●	●	●						
1.10	●	●	●	●	●	●	●	●	●	●	●	●	●	●	●	●	●	●	
1.15	●	●	●	●	●	●	●	●	●	●	●	●	●				○	○	
1.20	●	●	●	●	●	●	●	●	●	●	●	●	●	●	●	●	●	●	
1.25	●	●	●	●	●	●	●	●	●	●	●	●	●				○	○	
1.30	●	●	●	●	●	●	●	●	●	●	●	●	●	●	●	●	●	●	
1.35	●	●	●	●	●	●	●	●	●	●	●	●	●				○	○	
1.40	●	●	●	●	●	●	●	●	●	●	●	●	●	●	●	●	●	●	
1.45	●	●	●	●	●	●	●	●	●	●	●	●	●				●	●	
1.50	●	●	●	●	●	●	●	●	●	●	●	●	●	●	●	●	●	●	
1.55	●	●	●	●	●	●	●	●	●	●	●	●	●				○	○	
1.60	●	●	●	●	●	●	●	●	●	●	●	●	●	●	●	●	●	●	
1.65	●	●	●	●	●	●	●	●	●	●	●	●	●				○	○	
1.70	●	●	●	●	●	●	●	●	●	●	●	●	●	●	●	●	●	●	
1.75	●	●	●	●	●	●	●	●	●	●	●	●	●	●	●	●	●	●	
1.80	●	●	●	●	●	●	●	●	●	●	●	●	●				●	●	
1.85	●	●	●	●	●	●	●	●	●	●	●	●	●				○	○	
1.90	●	●	●	●	●	●	●	●	●	●	●	●	●	●	●	●	●	●	
1.95	●	●	●	●	●	●	●	●	●	●	●	●	●				○	○	
2.00	●	●	●	●	●	●	●	●	●	●	●	●	●	●	●	●	●	●	
2.05	●	○	○	○	○	○	○	○	○	○	○	○	○						
2.10	●	●	●	●	●	●	●	●	●	●	●	●	●				○	○	
2.15	●	●	●	●	●	●	●	●	●	●	●	●	●						
2.20	●	●	●	●	●	●	●	●	●	●	●	●	●				○	○	
2.25	●	●	●	●	●	●	●	●	●	●	●	●	●	●	●	●	●	●	
2.30	●	●	●	●	●	●	●	●	●	●	●	●	●				○	○	
2.35	●	○	○	○	○	○	○	○	○	○	○	○	○						
2.40	●	●	●	●	●	●	●	●	●	●	●	●	●				○	○	
2.45	●	○	○	○	○	○	○	○	○	○	○	○	○						
2.50	●	●	●	●	●	●	●	●	●	●	●	●	●	●	●	●	●	●	
2.55	●	○	○	○	○	○	○	○	○	○	○	○	○						
2.60	●	●	●	●	●	●	●	●	●	●	●	●	●				○	○	
2.65	●	○	○	○	○	○	○	○	○	○	○	○	○						
2.70	●	○	○	○	○	○	○	○	○	○	○	○	○				○	○	
2.75	●	●	●	●	●	●	●	●	●	●	●	●	●	●	●	●	●	●	

>>>

# Round Cuts

**KEY:**

- Standard portfolio item
- Item available upon request

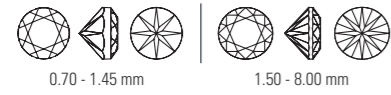
## “The Alpha” Round Brilliant (cont.)



Size	Cubic Zirconia										Cubic Zirconia									
	White	Black	Peridot	Olive	Gold	Champagne	Brown	Rhodolite	Pink		Orange	Amethyst	Purple	Lavender	Vanilla Silk PCT	Golden Amber PCT	Amaretto PCT	Aurora Borealis	Radiance	
2.80	●	○	○	○	○	○	○	○	○		○	○	○	○				○	○	
2.85	●	○	○	○	○	○	○	○	○		○	○	○	○						
2.90	●	○	○	○	○	○	○	○	○		○	○	○	○				○	○	
2.95	●	○	○	○	○	○	○	○	○		○	○	○	○						
3.00	●	●	●	●	●	●	●	●	●		●	●	●	●	●	●	●	●	●	
3.05	●	○	○	○	○	○	○	○	○		○	○	○	○						
3.10	●	○	○	○	○	○	○	○	○		○	○	○	○						
3.15	●	○	○	○	○	○	○	○	○		○	○	○	○						
3.20	●	○	○	○	○	○	○	○	○		○	○	○	○						
3.25	●	●	●	●	●	●	●	●	●		●	●	●	●						
3.30	●	○	○	○	○	○	○	○	○		○	○	○	○						
3.40	●	○	○	○	○	○	○	○	○		○	○	○	○						
3.50	●	●	●	●	●	●	●	●	●		●	●	●	●						
3.60	●	○	○	○	○	○	○	○	○		○	○	○	○						
3.70	●	○	○	○	○	○	○	○	○		○	○	○	○						
3.75	●	●	●	●	●	●	●	●	●		●	●	●	●						
3.80	●	○	○	○	○	○	○	○	○		○	○	○	○						
3.90	●	○	○	○	○	○	○	○	○		○	○	○	○						
4.00	●	●	●	●	●	●	●	●	●		●	●	●	●						
4.25	●	●	●	●	●	●	●	●	●		●	●	●	●						
4.50	●	●	●	●	●	●	●	●	●		●	●	●	●						
4.75	●	●	●	●	●	●	●	●	●		●	●	●	●						
5.00	●	●	●	●	●	●	●	●	●		●	●	●	●						
5.25	●	○	○	○	○	○	○	○	○		○	○	○	○						
5.50	●	○	○	○	○	○	○	○	○		○	○	○	○						
5.75	●	○	○	○	○	○	○	○	○		○	○	○	○						
6.00	●	○	○	○	○	○	○	○	○		○	○	○	○						
6.25	●	○	○	○	○	○	○	○	○		○	○	○	○						
6.50	●	○	○	○	○	○	○	○	○		○	○	○	○						
6.75	●	○	○	○	○	○	○	○	○		○	○	○	○						
7.00	●	○	○	○	○	○	○	○	○		○	○	○	○						
7.25	●	○	○	○	○	○	○	○	○		○	○	○	○						
7.50	●	○	○	○	○	○	○	○	○		○	○	○	○						
7.75	●	○	○	○	○	○	○	○	○		○	○	○	○						
8.00	●	○	○	○	○	○	○	○	○		○	○	○	○						

# Round Cuts

## "The Alpha" Round Brilliant



Size	Synthetic Spinel			Synthetic Corundum		Gemstones	
	Aquamarine	Medium Blue	Dark Blue	Medium Ruby	Dark Ruby	Genuine Red Garnet	Genuine Black Spinel
MM							
0.70	●	●	●	●	●	○	●
0.75	●	●	●	○	○		
0.80	●	●	●	●	●	●	●
0.85	●	●	●	○	○		
0.90	●	●	●	●	●	○	●
0.95	●	●	●	○	○		
1.00	●	●	●	●	●	●	●
1.05	●	●	●	○	○	○	○
1.10	●	●	●	●	●	○	●
1.15	●	●	●	●	●	○	○
1.20	●	●	●	●	●	○	●
1.25	●	●	●	●	●	●	●
1.30	●	●	●	●	●	○	●
1.35	●	●	●	○	○	○	○
1.40	●	●	●	●	●	○	●
1.45	●	●	●	○	○	○	○
1.50	●	●	●	●	●	●	●
1.55	●	●	●	○	○	○	○
1.60	●	●	●	●	●	○	●
1.65	●	●	●	○	○	○	○
1.70	●	●	●	●	●	○	●
1.75	●	●	●	●	●	●	●
1.80	●	●	●	●	●	○	●
1.85	●	●	●	○	○	○	○
1.90	●	●	●	●	●	○	●
1.95	●	●	●	○	○	○	○
2.00	●	●	●	●	●	●	●
2.05	○	○	○	○	○	○	○
2.10	●	●	●	○	○	○	○
2.15	●	●	●	○	○	○	○
2.20	●	●	●	○	○	○	○
2.25	●	●	●	●	●	●	●
2.30	●	●	●	○	○	○	○
2.35	○	○	○	○	○	○	○
2.40	●	●	●	○	○	○	○
2.45	○	○	○	○	○	○	○
2.50	●	●	●	●	●	●	●
2.55	○	○	○	○	○	○	○
2.60	●	●	●	●	●	○	○
2.65	○	○	○	○	○	○	○
2.70	○	○	○	○	○	○	○
2.75	●	●	●	●	●	○	○

>>>

## "The Alpha" Round Brilliant (cont.)



Size	Synthetic Spinel			Synthetic Corundum		Gemstones	
	Aquamarine	Medium Blue	Dark Blue	Medium Ruby	Dark Ruby	Genuine Red Garnet	Genuine Black Spinel
MM							
2.80	○	○	○	○	○	○	○
2.85	○	○	○	○	○	○	○
2.90	○	○	○	○	○	○	○
2.95	○	○	○	○	○	○	○
3.00	●	●	●	●	●	●	●
3.05	○	○	○	○	○		
3.10	○	○	○	○	○		
3.15	○	○	○	○	○		
3.20	○	○	○	○	○		
3.25	●	●	●	●	●		
3.30	○	○	○	○	○		
3.40	○	○	○	○	○		
3.50	●	●	●	●	●		
3.60	○	○	○	○	○		
3.70	○	○	○	○	○		
3.75	●	●	●	●	●		
3.80	○	○	○	○	○		
3.90	○	○	○	○	○		
4.00	●	●	●	●	●		
4.25	●	●	●	●	●		
4.50	●	●	●	●	●		
4.75	●	●	●	●	●		
5.00	●	●	●	●	●		
5.25				○	○		
5.50	○	○	○	○	○		
5.75				○	○		
6.00	○	○	○	○	○		
6.25	○	○	○	○	○		
6.50	○	○	○	○	○		
6.75				○	○		
7.00	○	○	○	○	○		
7.25				○	○		
7.50				○	○		
7.75				○	○		
8.00	○	○	○	○	○		

**KEY:**  
 ● Standard portfolio item  
 ○ Item available upon request



# Round Cuts

## “The Alpha” Round Brilliant

### Packaging and Weight

#### Cubic Zirconia

Size	Approx. weight of 100 pcs	Approx. pcs per 1 gram	Packg. unit
MM PIECES			
0.70	0.063	1,584	1,000
0.75	0.076	1,324	1,000
0.80	0.090	1,115	1,000
0.85	0.106	947	1,000
0.90	0.123	815	1,000
0.95	0.142	706	1,000
1.00	0.166	601	1,000
1.05	0.189	528	1,000
1.10	0.215	466	1,000
1.15	0.242	413	1,000
1.20	0.277	361	1,000
1.25	0.309	323	1,000
1.30	0.344	291	1,000
1.35	0.381	263	1,000
1.40	0.436	229	1,000
1.45	0.479	209	1,000
1.50	0.532	188	1,000
1.55	0.581	172	1,000
1.60	0.633	158	1,000
1.65	0.700	143	1,000
1.70	0.759	132	1,000
1.75	0.821	122	1,000
1.80	0.886	113	1,000
1.85	0.969	103	1,000
1.90	1.043	96	1,000
1.95	1.119	89	1,000
2.00	1.198	83	500
2.05	1.282	78	500
2.10	1.369	73	500
2.15	1.461	68	500
2.20	1.576	63	500
2.25	1.677	60	500
2.30	1.781	56	500
2.35	1.889	53	500
2.40	2.027	49	500
2.45	2.145	47	500
2.50	2.267	44	500
2.55	2.394	42	500
2.60	2.525	40	500

Size	Approx. weight of 100 pcs	Approx. pcs per 1 gram	Packg. unit
MM PIECES			
2.65	2.661	38	500
2.70	2.834	35	500
2.75	2.981	34	200
2.80	3.133	32	200
2.85	3.290	30	200
2.90	3.452	29	200
2.95	3.619	28	200
3.00	3.792	26	200
3.05	3.970	25	200
3.10	4.150	24	100
3.15	4.342	23	100
3.20	4.536	22	100
3.25	4.736	21	100
3.30	4.942	20	100
3.40	5.371	19	100
3.50	5.824	17	100
3.60	6.301	16	100
3.70	6.804	15	100
3.75	7.065	14	100
3.80	7.333	14	100
3.90	7.869	13	80
4.00	8.541	12	80
4.25	10.130	10	80
4.50	11.994	8	60
4.75	13.971	7	60
5.00	16.266	6	60
5.25	18.676	5	60
5.50	21.448	5	60
5.75	24.332	4	60
6.00	27.625	4	50
6.25	31.027	3	50
6.50	34.886	3	50
6.75	38.848	3	50
7.00	43.318	3	35
7.25	47.883	2	35
7.50	53.009	2	35
7.75	58.218	2	35
8.00	64.045	2	35

#### Synthetic Spinel

Size	Approx. wt of 100 pcs	Approx. pcs per 1 gram	Packg. unit
MM PIECES			
0.70	0.039	2,596	1,000
0.75	0.046	2,170	1,000
0.80	0.055	1,827	1,000
0.85	0.064	1,552	1,000
0.90	0.075	1,335	1,000
0.95	0.086	1,157	1,000
1.00	0.102	985	1,000
1.05	0.116	865	1,000
1.10	0.131	763	1,000
1.15	0.148	678	1,000
1.20	0.169	591	1,000
1.25	0.189	530	1,000
1.30	0.210	476	1,000
1.35	0.232	431	1,000
1.40	0.266	376	1,000
1.45	0.292	342	1,000
1.50	0.325	308	1,000
1.55	0.355	282	1,000
1.60	0.386	259	1,000
1.65	0.427	234	1,000
1.70	0.463	216	1,000
1.75	0.501	200	1,000
1.80	0.541	185	1,000
1.85	0.591	169	1,000
1.90	0.636	157	1,000
1.95	0.683	147	1,000
2.00	0.731	137	500
2.05	0.782	128	500
2.10	0.836	120	500
2.15	0.891	112	500
2.20	0.962	104	500
2.25	1.023	98	500
2.30	1.086	92	500
2.35	1.153	87	500
2.40	1.237	81	500
2.45	1.309	76	500
2.50	1.383	72	500
2.55	1.461	68	500
2.60	1.541	65	500
2.65	1.624	62	500
2.70	1.729	58	500
2.75	1.819	55	200
2.80	1.912	52	200

Size	Approx. wt of 100 pcs	Approx. pcs per 1 gram	Packg. unit
MM PIECES			
2.85	2.007	50	200
2.90	2.106	47	200
2.95	2.208	45	200
3.00	2.314	43	200
3.05	2.422	41	200
3.10	2.534	39	100
3.15	2.649	38	100
3.20	2.768	36	100
3.25	2.890	35	100
3.30	3.015	33	100
3.40	3.277	31	100
3.50	3.554	28	100
3.60	3.845	26	100
3.70	4.152	24	100
3.75	4.311	23	100
3.80	4.474	22	100
3.90	4.801	21	80
4.00	5.212	19	80
4.25	6.181	16	80
4.50	7.318	14	60
4.75	8.525	12	60
5.00	9.925	10	60
5.50	15.440	7	60
6.00	19.540	5	50
6.25	21.480	5	50
6.50	23.420	4	50
7.00	31.980	3	35
8.00	44.860	2	35

“The Alpha” Round Brilliant (cont.)

Packaging and Weight

**Synthetic Corundum**

Size	Approx. wt of 100 pcs	Approx. pcs per 1 gram	Packg. unit
MM		PIECES	
0.70	0.042	2,396	1,000
0.75	0.050	2,003	1,000
0.80	0.059	1,687	1,000
0.85	0.070	1,432	1,000
0.90	0.081	1,233	1,000
0.95	0.094	1,068	1,000
1.00	0.110	909	1,000
1.05	0.125	799	1,000
1.10	0.142	704	1,000
1.15	0.160	625	1,000
1.20	0.183	546	1,000
1.25	0.204	489	1,000
1.30	0.227	440	1,000
1.35	0.252	398	1,000
1.40	0.288	347	1,000
1.45	0.317	316	1,000
1.50	0.352	284	1,000
1.55	0.384	260	1,000
1.60	0.418	239	1,000
1.65	0.463	216	1,000
1.70	0.502	199	1,000
1.75	0.542	184	1,000
1.80	0.586	171	1,000
1.85	0.641	156	1,000
1.90	0.689	145	1,000
1.95	0.739	135	1,000
2.00	0.792	126	500
2.05	0.847	118	500
2.10	0.905	110	500
2.15	0.966	104	500
2.20	1.042	96	500
2.25	1.108	90	500
2.30	1.177	85	500
2.35	1.249	80	500
2.40	1.340	75	500
2.45	1.418	71	500
2.50	1.498	67	500
2.55	1.582	63	500
2.60	1.669	60	500

Size	Approx. wt of 100 pcs	Approx. pcs per 1 gram	Packg. unit
MM		PIECES	
2.65	1.759	57	500
2.70	1.873	53	500
2.75	1.971	51	200
2.80	2.071	48	200
2.85	2.175	46	200
2.90	2.282	44	200
2.95	2.392	42	200
3.00	2.507	40	200
3.05	2.624	38	200
3.10	2.745	36	100
3.15	2.870	35	100
3.20	2.998	33	100
3.25	3.131	32	100
3.30	3.267	31	100
3.40	3.550	28	100
3.50	3.850	26	100
3.60	4.165	24	100
3.70	4.498	22	100
3.75	4.670	21	100
3.80	4.847	21	100
3.90	5.201	19	80
4.00	5.646	18	80
4.25	6.696	15	80
4.50	7.928	13	60
4.75	9.235	11	60
5.00	10.752	9	60
5.25	12.345	8	60
5.50	14.177	7	60
5.75	16.084	6	60
6.00	18.261	6	50
6.25	20.509	5	50
6.50	23.060	4	50
6.75	25.679	4	50
7.00	28.634	4	35
7.25	31.651	3	35
7.50	35.040	3	35
7.75	38.483	3	35
8.00	42.335	2	35

**Genuine Red Garnet**

Size	Approx. wt of 100 pcs	Approx. pcs per 1 gram	Packg. unit
MM		PIECES	
0.70	0.040	2,492	1,000
0.80	0.057	1,754	1,000
0.90	0.078	1,282	1,000
1.00	0.106	946	1,000
1.05	0.120	831	1,000
1.10	0.137	733	1,000
1.15	0.154	650	1,000
1.20	0.176	567	1,000
1.25	0.197	509	1,000
1.30	0.219	457	1,000
1.35	0.242	413	1,000
1.40	0.277	361	1,000
1.45	0.305	328	1,000
1.50	0.338	296	1,000
1.55	0.369	271	1,000
1.60	0.402	249	1,000
1.65	0.445	225	1,000
1.70	0.482	207	1,000
1.75	0.522	192	1,000
1.80	0.563	178	1,000
1.85	0.616	162	1,000
1.90	0.663	151	1,000
1.95	0.711	141	1,000
2.00	0.762	131	500
2.05	0.815	123	500
2.10	0.870	115	500
2.15	0.929	108	500
2.20	1.002	100	500
2.25	1.066	94	500
2.30	1.132	88	500
2.35	1.201	83	500
2.40	1.288	78	500
2.45	1.363	73	500
2.50	1.441	69	500
2.55	1.521	66	500
2.60	1.605	62	500
2.65	1.692	59	500
2.70	1.801	56	500
2.75	1.895	53	200
2.80	1.991	50	200
2.85	2.091	48	200
2.90	2.194	46	200
2.95	2.300	43	200
3.00	2.410	41	200

**Genuine Black Spinel**

Size	Approx. wt of 100 pcs	Approx. pcs per 1 gram	Packg. unit
MM		PIECES	
0.70	0.041	2,459	1,000
0.80	0.058	1,731	1,000
0.90	0.079	1,265	1,000
1.00	0.107	933	1,000
1.05	0.122	820	1,000
1.10	0.138	723	1,000
1.15	0.156	642	1,000
1.20	0.179	560	1,000
1.25	0.199	502	1,000
1.30	0.222	451	1,000
1.35	0.245	408	1,000
1.40	0.281	356	1,000
1.45	0.309	324	1,000
1.50	0.343	292	1,000
1.55	0.374	267	1,000
1.60	0.408	245	1,000
1.65	0.451	222	1,000
1.70	0.489	205	1,000
1.75	0.529	189	1,000
1.80	0.571	175	1,000
1.85	0.624	160	1,000
1.90	0.671	149	1,000
1.95	0.720	139	1,000
2.00	0.772	130	500
2.05	0.826	121	500
2.10	0.882	113	500
2.15	0.941	106	500
2.20	1.015	98	500
2.25	1.080	93	500
2.30	1.147	87	500
2.35	1.217	82	500
2.40	1.305	77	500
2.45	1.381	72	500
2.50	1.460	68	500
2.55	1.542	65	500
2.60	1.626	61	500
2.65	1.714	58	500
2.70	1.825	55	500
2.75	1.920	52	200
2.80	2.018	50	200
2.85	2.119	47	200
2.90	2.223	45	200
2.95	2.331	43	200
3.00	2.442	41	200

# Round Cuts

## Round Simple



Size	Gemstones		
	White	Genuine Red Garnet	Genuine Black Spinel
MM			
0.50	●	○	○
0.60	●	○	○

Additional colors of Cubic Zirconia are produced only upon request. See page 12 for full list of colors.

## Packaging and Weight

### Cubic Zirconia

Size	Approx. weight of 100 pcs	Approx. pcs per 1 gram	Packg. unit
MM			PIECES
0.50	0.022	4,581	1,000
0.60	0.038	2,608	1,000

### Genuine Red Garnet

Size	Approx. wt of 100 pcs	Approx. pcs per 1 gram	Packg. unit
MM			PIECES
0.50	0.014	7,207	1,000
0.60	0.024	4,103	1,000

### Genuine Black Spinel

Size	Approx. wt of 100 pcs	Approx. pcs per 1 gram	Packg. unit
MM			PIECES
0.50	0.014	7,112	1,000
0.60	0.025	4,049	1,000

## 100 Faceted



Size	White
MM	
2.00	●
2.50	●
3.00	●
3.50	●
4.00	●
4.50	●
5.00	●
5.50	●
6.00	●
6.50	●
7.00	●
7.50	●
8.00	●

Additional colors of Cubic Zirconia are produced only upon request. See page 12 for full list of colors.

## Packaging and Weight

### Cubic Zirconia

Size	Approx. weight of 100 pcs	Approx. pcs per 1 gram	Packg. unit
MM			PIECES
2.00	1.236	81	500
2.50	2.341	43	500
3.00	3.918	26	200
3.50	6.020	17	100
4.00	8.831	11	80
4.50	12.401	8	60
5.00	16.819	6	60
5.50	22.175	5	60
6.00	28.727	4	50
6.50	36.457	3	50
7.00	45.461	2	35
7.50	55.579	2	35
8.00	67.389	2	35

### KEY:

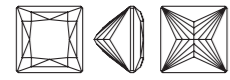
- Standard portfolio item
- Item available upon request



# Fancy Cuts

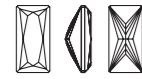
Preciosa's fancy cuts for fine jewelry stones reflect a curated assortment of the most classic gemstone cuts, each meticulously developed in-house using the latest diamond-cutting software. Individually cut and polished to scintillating perfection, our fancy-cut stones are recognized throughout the global jewelry-making industry for their unparalleled light dispersion and quality.

## Fancy Cuts



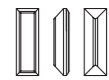
### Square Princess

mm 1.20 × 1.20, 1.25 × 1.25, 1.30 × 1.30, 1.40 × 1.40, 1.50 × 1.50, 1.75 × 1.75, 2.00 × 2.00, 2.25 × 2.25, 2.50 × 2.50, 2.75 × 2.75, 3.00 × 3.00, 3.50 × 3.50, 4.00 × 4.00, 4.50 × 4.50, 5.00 × 5.00, 5.50 × 5.50, 6.00 × 6.00, 7.00 × 7.00, 8.00 × 8.00



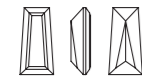
### Baguette Princess

mm 3.00 × 2.00, 4.00 × 2.00, 5.00 × 2.50, 6.00 × 3.00, 7.00 × 3.50, 8.00 × 4.00



### Baguette Step

mm 2.00 × 1.00, 3.00 × 1.00



### Tapered Baguette

mm 2.00 × 1.50 × 1.00, 2.50 × 1.50 × 1.00, 2.50 × 2.00 × 1.50, 3.00 × 2.00 × 1.00, 3.00 × 2.50 × 1.50, 3.50 × 1.50 × 1.00, 3.50 × 2.50 × 1.50, 4.00 × 2.00 × 1.50



### Marquise Diamond

mm 3.00 × 1.50, 3.00 × 2.00, 4.00 × 2.00, 4.50 × 2.50, 5.00 × 2.50, 6.00 × 3.00, 7.00 × 3.50, 8.00 × 4.00



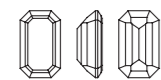
### Pear Diamond

mm 3.00 × 2.00, 4.00 × 2.00, 4.00 × 3.00, 5.00 × 3.00, 5.00 × 4.00, 6.00 × 4.00, 7.00 × 5.00, 8.00 × 6.00



### Oval Diamond

mm 4.00 × 2.00, 4.00 × 3.00, 5.00 × 3.00, 6.00 × 4.00, 7.00 × 5.00, 8.00 × 6.00



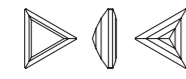
### Octagon Step

mm 4.00 × 2.00, 5.00 × 3.00, 6.00 × 4.00, 7.00 × 5.00, 8.00 × 6.00



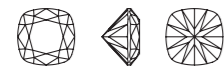
### Heart

mm 2.00 × 2.00, 2.50 × 2.50, 3.00 × 3.00, 3.50 × 3.50, 4.00 × 4.00, 4.50 × 4.50, 5.00 × 5.00, 5.50 × 5.50, 6.00 × 6.00, 6.50 × 6.50, 7.00 × 7.00, 7.50 × 7.50, 8.00 × 8.00, 10.00 × 10.00, 12.00 × 12.00



### Triangle Step

mm 2.00, 3.00, 4.00, 5.00, 6.00



### Cushion

mm 2.00 × 2.00, 3.00 × 3.00, 4.00 × 4.00, 5.00 × 5.00, 6.00 × 6.00

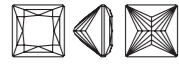


# Fancy Cuts

**KEY:**

- Standard portfolio item
- Item available upon request

## Square Princess



Size	Cubic Zirconia									Cubic Zirconia				Synthetic Spinel			Synthetic Corundum	
	White	Black	Peridot	Olive	Gold	Champagne	Brown	Rhodolite	Pink	Orange	Amethyst	Purple	Lavender	Aquamarine	Medium Blue	Dark Blue	Medium Ruby	Dark Ruby
MM																		
1.20 x 1.20	○	○	○	○	○	○	○	○	○	○	○	○	○	○	○	○		
1.25 x 1.25	●	●	●	●	●	●	●	●	●	●	●	●	●	●	●	●		
1.30 x 1.30	●	○	○	○	○	○	○	○	○	○	○	○	○	○	○	○		
1.40 x 1.40	●	○	○	○	○	○	○	○	○	○	○	○	○	○	○	○		
1.50 x 1.50	●	●	●	●	●	●	●	●	●	●	●	●	●	●	●	●	●	●
1.75 x 1.75	●	●	●	●	●	●	●	●	●	●	●	●	●	●	●	●	●	●
2.00 x 2.00	●	●	●	●	●	●	●	●	●	●	●	●	●	●	●	●	●	●
2.25 x 2.25	●	●	●	●	●	●	●	●	●	●	●	●	●	●	●	●	●	●
2.50 x 2.50	●	●	●	●	●	●	●	●	●	●	●	●	●	●	●	●	●	●
2.75 x 2.75	●	●	●	●	●	●	●	●	●	●	●	●	●	●	●	●	●	●
3.00 x 3.00	●	●	●	●	●	●	●	●	●	●	●	●	●	●	●	●	●	●
3.50 x 3.50	●	●	●	●	●	●	●	●	●	●	●	●	●	●	●	●	●	●
4.00 x 4.00	●	●	●	●	●	●	●	●	●	●	●	●	●	●	●	●	●	●
4.50 x 4.50	●	○	○	○	○	○	○	○	○	○	○	○	○					
5.00 x 5.00	●	○	○	○	○	○	○	○	○	○	○	○	○				○	○
5.50 x 5.50	●	○	○	○	○	○	○	○	○	○	○	○	○				○	○
6.00 x 6.00	●	○	○	○	○	○	○	○	○	○	○	○	○				○	○
7.00 x 7.00	●	○	○	○	○	○	○	○	○	○	○	○	○					
8.00 x 8.00	●	○	○	○	○	○	○	○	○	○	○	○	○					

## Packaging and Weight

### Cubic Zirconia

Size	Approx. weight of 100 pcs	Approx. pcs per 1 gram	Packg. unit
MM	PIECES		
1.20 x 1.20	0.401	250	500
1.25 x 1.25	0.449	223	500
1.30 x 1.30	0.509	197	500
1.40 x 1.40	0.634	158	200
1.50 x 1.50	0.778	129	200
1.75 x 1.75	1.201	83	200
2.00 x 2.00	1.785	56	200
2.25 x 2.25	2.491	40	200
2.50 x 2.50	3.361	30	200
2.75 x 2.75	4.445	22	200
3.00 x 3.00	5.740	17	100
3.50 x 3.50	8.931	11	100
4.00 x 4.00	13.263	8	80
4.50 x 4.50	17.156	6	70
5.00 x 5.00	25.519	4	70
5.50 x 5.50	29.059	4	70
6.00 x 6.00	43.434	2	40
7.00 x 7.00	63.620	2	40
8.00 x 8.00	254.480	1	20

## Packaging and Weight

### Synthetic Spinel

Size	Approx. wt of 100 pcs	Approx. pcs per 1 gram	Packg. unit
MM	PIECES		
1.20 x 1.20	0.244	409	500
1.25 x 1.25	0.274	365	500
1.30 x 1.30	0.310	322	500
1.40 x 1.40	0.387	259	200
1.50 x 1.50	0.475	211	200
1.75 x 1.75	0.733	136	200
2.00 x 2.00	1.089	92	200
2.25 x 2.25	1.520	66	200
2.50 x 2.50	2.051	49	200
2.75 x 2.75	2.712	37	200
3.00 x 3.00	3.502	29	100
3.50 x 3.50	5.450	18	100
4.00 x 4.00	8.093	12	80

### Synthetic Corundum

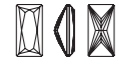
Size	Approx. wt of 100 pcs	Approx. pcs per 1 gram	Packg. unit
MM	PIECES		
1.50 x 1.50	0.514	194	200
1.75 x 1.75	0.794	126	200
2.00 x 2.00	1.180	85	200
2.25 x 2.25	1.647	61	200
2.50 x 2.50	2.222	45	200
2.75 x 2.75	2.938	34	200
3.00 x 3.00	3.794	26	100
3.50 x 3.50	5.904	17	100
4.00 x 4.00	8.767	11	80
5.00 x 5.00	16.869	6	70
6.00 x 6.00	28.711	4	40

# Fancy Cuts

**KEY:**

- Standard portfolio item
- Item available upon request

## Baguette Princess



Size	Cubic Zirconia									Cubic Zirconia				Synthetic Spinel			Synthetic Corundum	
	White	Black	Peridot	Olive	Gold	Champagne	Brown	Rhodolite	Pink	Orange	Amethyst	Purple	Lavender	Aquamarine	Medium Blue	Dark Blue	Medium Ruby	Dark Ruby
MM	PIECES																	
3.00 x 2.00	●	●	●	●	●	●	●	●	●	●	●	●	●	●	●	●	●	●
4.00 x 2.00	●	●	●	●	●	●	●	●	●	●	●	●	●	●	●	●	●	●
5.00 x 2.50	●	●	●	●	●	●	●	●	●	●	●	●	●	●	●	●	●	●
6.00 x 3.00	●	●	●	●	●	●	●	●	●	●	●	●	●	●	●	●	●	●
7.00 x 3.50	●	○	○	○	○	○	○	○	○	○	○	○	○					
8.00 x 4.00	●	○	○	○	○	○	○	○	○	○	○	○	○					

### Packaging and Weight

#### Cubic Zirconia

Size	Approx. weight of 100 pcs	Approx. pcs per 1 gram	Packg. unit
MM	PIECES		
3.00 x 2.00	2.650	38	200
4.00 x 2.00	3.815	26	100
5.00 x 2.50	7.212	14	100
6.00 x 3.00	12.332	8	70
7.00 x 3.50	19.429	5	40
8.00 x 4.00	28.830	3	40

### Packaging and Weight

#### Synthetic Spinel

Size	Approx. wt of 100 pcs	Approx. pcs per 1 gram	Packg. unit
MM	PIECES		
3.00 x 2.00	1.617	62	200
4.00 x 2.00	2.328	43	100
5.00 x 2.50	4.400	23	100
6.00 x 3.00	7.525	13	70

#### Synthetic Corundum

Size	Approx. wt of 100 pcs	Approx. pcs per 1 gram	Packg. unit
MM	PIECES		
3.00 x 2.00	1.751	57	200
4.00 x 2.00	2.522	40	100
5.00 x 2.50	4.767	21	100
6.00 x 3.00	8.152	12	70

## Baguette Step



Size	Cubic Zirconia									Cubic Zirconia				Synthetic Spinel			Synthetic Corundum	
	White	Black	Peridot	Olive	Gold	Champagne	Brown	Rhodolite	Pink	Orange	Amethyst	Purple	Lavender	Aquamarine	Medium Blue	Dark Blue	Medium Ruby	Dark Ruby
MM	PIECES																	
2.00 x 1.00	●	●	●	●	●	●	●	●	●	●	●	●	●	●	●	●	○	○
3.00 x 1.00	●	●	●	●	●	●	●	●	●	●	●	●	●	●	●	●	○	○

### Packaging and Weight

#### Cubic Zirconia

Size	Approx. weight of 100 pcs	Approx. pcs per 1 gram	Packg. unit
MM	PIECES		
2.00 x 1.00	0.464	215	500
3.00 x 1.00	0.725	138	500

### Packaging and Weight

#### Synthetic Spinel

Size	Approx. wt of 100 pcs	Approx. pcs per 1 gram	Packg. unit
MM	PIECES		
2.00 x 1.00	0.283	353	500
3.00 x 1.00	0.442	226	500

#### Synthetic Corundum

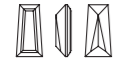
Size	Approx. wt of 100 pcs	Approx. pcs per 1 gram	Packg. unit
MM	PIECES		
2.00 x 1.00	0.307	326	500
3.00 x 1.00	0.479	209	500

# Fancy Cuts

**KEY:**

- Standard portfolio item
- Item available upon request

## Tapered Baguette



Size	Cubic Zirconia									Cubic Zirconia				Synthetic Spinel			Synthetic Corundum	
	White	Black	Peridot	Olive	Gold	Champagne	Brown	Rhodolite	Pink	Orange	Amethyst	Purple	Lavender	Aquamarine	Medium Blue	Dark Blue	Medium Ruby	Dark Ruby
MM	PIECES																	
2.00 × 1.50 × 1.00	●	●	●	●	●	●	●	●	●	●	●	●	●	●	●	●	○	○
2.50 × 1.50 × 1.00	●	●	●	●	●	●	●	●	●	●	●	●	●	●	●	●	○	○
2.50 × 2.00 × 1.50	●	●	●	●	●	●	●	●	●	●	●	●	●	●	●	●	○	○
3.00 × 2.00 × 1.00	●	●	●	●	●	●	●	●	●	●	●	●	●	●	●	●	○	○
3.00 × 2.50 × 1.50	●	●	●	●	●	●	●	●	●	●	●	●	●	●	●	●	○	○
3.50 × 1.50 × 1.00	●	●	●	●	●	●	●	●	●	●	●	●	●	●	●	●	○	○
3.50 × 2.50 × 1.50	●	●	●	●	●	●	●	●	●	●	●	●	●	●	●	●	○	○
4.00 × 2.00 × 1.50	●	●	●	●	●	●	●	●	●	●	●	●	●	●	●	●	○	○

## Packaging and Weight

### Cubic Zirconia

Size	Approx. weight of 100 pcs	Approx. pcs per 1 gram	Packg. unit
MM	PIECES		
2.00 × 1.50 × 1.00	0.771	130	200
2.50 × 1.50 × 1.00	1.066	94	200
2.50 × 2.00 × 1.50	1.762	57	200
3.00 × 2.00 × 1.00	2.034	49	200
3.00 × 2.50 × 1.50	3.382	30	200
3.50 × 1.50 × 1.00	1.620	62	200
3.50 × 2.50 × 1.50	3.731	27	100
4.00 × 2.00 × 1.50	3.155	32	100

## Packaging and Weight

### Synthetic Spinel

Size	Approx. wt of 100 pcs	Approx. pcs per 1 gram	Packg. unit
MM	PIECES		
2.00 × 1.50 × 1.00	0.471	213	200
2.50 × 1.50 × 1.00	0.651	154	200
2.50 × 2.00 × 1.50	1.075	93	200
3.00 × 2.00 × 1.00	1.241	81	200
3.00 × 2.50 × 1.50	2.064	48	200
3.50 × 1.50 × 1.00	0.988	101	200
3.50 × 2.50 × 1.50	2.277	44	100
4.00 × 2.00 × 1.50	1.925	52	100

### Synthetic Corundum

Size	Approx. wt of 100 pcs	Approx. pcs per 1 gram	Packg. unit
MM	PIECES		
2.00 × 1.50 × 1.00	0.471	196	200
2.50 × 1.50 × 1.00	0.651	142	200
2.50 × 2.00 × 1.50	1.075	86	200
3.00 × 2.00 × 1.00	1.241	74	200
3.00 × 2.50 × 1.50	2.064	45	200
3.50 × 1.50 × 1.00	0.988	93	200
3.50 × 2.50 × 1.50	2.277	41	100
4.00 × 2.00 × 1.50	1.925	48	100



# Fancy Cuts

**KEY:**

- Standard portfolio item
- Item available upon request

## Marquise Diamond



Size	Cubic Zirconia									Cubic Zirconia				Synthetic Spinel			Synthetic Corundum	
	White	Black	Peridot	Olive	Gold	Champagne	Brown	Rhodolite	Pink	Orange	Amethyst	Purple	Lavender	Aquamarine	Medium Blue	Dark Blue	Medium Ruby	Dark Ruby
MM	PIECES																	
3.00 x 1.50	●	●	●	●	●	●	●	●	●	●	●	●	●	●	●	●	●	●
3.00 x 2.00	●	●	●	●	●	●	●	●	●	●	●	●	●	●	●	●	●	●
4.00 x 2.00	●	●	●	●	●	●	●	●	●	●	●	●	●	●	●	●	●	●
4.50 x 2.50	●	●	●	●	●	●	●	●	●	●	●	●	●	○	○	○	○	○
5.00 x 2.50	●	●	●	●	●	●	●	●	●	●	●	●	●	●	●	●	●	●
6.00 x 3.00	●	●	●	●	●	●	●	●	●	●	●	●	●	●	●	●	●	●
7.00 x 3.50	●	○	○	○	○	○	○	○	○	○	○	○	○	○	○	○	○	○
8.00 x 4.00	●	○	○	○	○	○	○	○	○	○	○	○	○	○	○	○	○	○

### Packaging and Weight

#### Cubic Zirconia

Size	Approx. weight of 100 pcs	Approx. pcs per 1 gram	Packg. unit
MM	PIECES		
3.00 x 1.50	1.039	96	200
3.00 x 2.00	1.797	56	200
4.00 x 2.00	2.341	43	100
4.50 x 2.50	3.906	26	100
5.00 x 2.50	4.328	23	100
6.00 x 3.00	7.345	14	70
7.00 x 3.50	11.512	9	40
8.00 x 4.00	17.014	6	40

### Packaging and Weight

#### Synthetic Spinel

Size	Approx. wt of 100 pcs	Approx. pcs per 1 gram	Packg. unit
MM	PIECES		
3.00 x 1.50	0.634	158	200
3.00 x 2.00	1.097	91	200
4.00 x 2.00	1.428	70	100
4.50 x 2.50	2.384	42	100
5.00 x 2.50	2.641	38	100
6.00 x 3.00	4.482	22	70
7.00 x 3.50	7.024	14	40
8.00 x 4.00	10.382	10	40

#### Synthetic Corundum

Size	Approx. wt of 100 pcs	Approx. pcs per 1 gram	Packg. unit
MM	PIECES		
3.00 x 1.50	0.687	146	200
3.00 x 2.00	1.188	84	200
4.00 x 2.00	1.548	65	100
4.50 x 2.50	2.582	39	100
5.00 x 2.50	2.861	35	100
6.00 x 3.00	4.855	21	70
7.00 x 3.50	7.610	13	40
8.00 x 4.00	11.247	9	40

# Fancy Cuts

**KEY:**

- Standard portfolio item
- Item available upon request

## Pear Diamond



Size	Cubic Zirconia									Cubic Zirconia				Synthetic Spinel			Synthetic Corundum		
	White	Black	Peridot	Olive	Gold	Champagne	Brown	Rhodolite	Pink	Orange	Amethyst	Purple	Lavender	Aquamarine	Medium Blue	Dark Blue	Medium Ruby	Dark Ruby	
MM	PIECES																		
3.00 x 2.00	●	●	●	●	●	●	●	●	●	●	●	●	●	●	●	●	●	●	●
4.00 x 2.00	●	●	●	●	●	●	●	●	●	●	●	●	●	●	●	●	●	●	●
4.00 x 3.00	●	●	●	●	●	●	●	●	●	●	●	●	●	●	●	●	●	●	●
5.00 x 3.00	●	●	●	●	●	●	●	●	●	●	●	●	●	●	●	●	●	●	●
5.00 x 4.00	●	○	○	○	○	○	○	○	○	○	○	○	○	○	○	○	○	○	○
6.00 x 4.00	●	●	●	●	●	●	●	●	●	●	●	●	●	●	●	●	●	●	●
7.00 x 5.00	●	●	●	●	●	●	●	●	●	●	●	●	●	●	●	●	●	●	●
8.00 x 6.00	●	○	○	○	○	○	○	○	○	○	○	○	○	○	○	○	○	○	○

## Packaging and Weight

### Cubic Zirconia

Size	Approx. weight of 100 pcs	Approx. pcs per 1 gram	Packg. unit
MM	PIECES		
3.00 x 2.00	1.883	53	100
4.00 x 2.00	2.379	42	100
4.00 x 3.00	5.039	20	100
5.00 x 3.00	6.316	16	70
5.00 x 4.00	11.053	9	50
6.00 x 4.00	13.521	7	50
7.00 x 5.00	24.220	4	40
8.00 x 6.00	37.589	3	40

## Packaging and Weight

### Synthetic Spinel

Size	Approx. wt of 100 pcs	Approx. pcs per 1 gram	Packg. unit
MM	PIECES		
3.00 x 2.00	1.149	87	100
4.00 x 2.00	1.452	69	100
4.00 x 3.00	3.075	33	100
5.00 x 3.00	3.854	26	70
5.00 x 4.00	6.744	15	50
6.00 x 4.00	8.250	12	50
7.00 x 5.00	14.778	7	40

### Synthetic Corundum

Size	Approx. wt of 100 pcs	Approx. pcs per 1 gram	Packg. unit
MM	PIECES		
3.00 x 2.00	1.245	80	100
4.00 x 2.00	1.573	64	100
4.00 x 3.00	3.331	30	100
5.00 x 3.00	4.175	24	70
5.00 x 4.00	7.306	14	50
6.00 x 4.00	8.938	11	50
7.00 x 5.00	16.010	6	40
8.00 x 6.00	24.847	4	40

# Fancy Cuts

## Oval Diamond



**KEY:**

- Standard portfolio item
- Item available upon request

Size	Cubic Zirconia									Cubic Zirconia				Synthetic Spinel			Synthetic Corundum	
	White	Black	Peridot	Olive	Gold	Champagne	Brown	Rhodolite	Pink	Orange	Amethyst	Purple	Lavender	Aquamarine	Medium Blue	Dark Blue	Medium Ruby	Dark Ruby
MM																		
4.00 x 2.00	●	●	●	●	●	●	●	●	●	●	●	●	●	●	●	●	○	○
4.00 x 3.00	●	●	●	●	●	●	●	●	●	●	●	●	●	○	○	○	○	○
5.00 x 3.00	●	●	●	●	●	●	●	●	●	●	●	●	●	●	●	●	○	○
6.00 x 4.00	●	●	●	●	●	●	●	●	●	●	●	●	●	●	●	●	○	○
7.00 x 5.00	●	●	●	●	●	●	●	●	●	●	●	●	●	●	●	●	○	○
8.00 x 6.00	●	○	○	○	○	○	○	○	○	○	○	○	○	○	○	○	○	○

### Packaging and Weight

#### Cubic Zirconia

Size	Approx. weight of 100 pcs	Approx. pcs per 1 gram	Packg. unit
MM PIECES			
4.00 x 2.00	2.503	40	100
4.00 x 3.00	5.499	18	100
5.00 x 3.00	6.524	15	70
6.00 x 4.00	14.130	7	50
7.00 x 5.00	25.322	4	40
8.00 x 6.00	40.656	3	40

### Packaging and Weight

#### Synthetic Spinel

Size	Approx. wt of 100 pcs	Approx. pcs per 1 gram	Packg. unit
MM PIECES			
4.00 x 2.00	1.527	65	100
4.00 x 3.00	3.355	30	100
5.00 x 3.00	3.981	25	70
6.00 x 4.00	8.622	12	50
7.00 x 5.00	15.451	7	40
8.00 x 6.00	24.807	4	40

#### Synthetic Corundum

Size	Approx. wt of 100 pcs	Approx. pcs per 1 gram	Packg. unit
MM PIECES			
4.00 x 2.00	1.655	60	100
4.00 x 3.00	3.635	28	100
5.00 x 3.00	4.313	23	70
6.00 x 4.00	9.340	11	50
7.00 x 5.00	16.738	6	40
8.00 x 6.00	26.875	4	40



# Fancy Cuts

**KEY:**

- Standard portfolio item
- Item available upon request

## Heart



Size	Cubic Zirconia									Cubic Zirconia			
	White	Black	Peridot	Olive	Gold	Champagne	Brown	Rhodolite	Pink	Orange	Amethyst	Purple	Lavender
MM	●	●	●	●	●	●	●	●	●	●	●	●	●
2.00 x 2.00	●	●	●	●	●	●	●	●	●	●	●	●	●
2.50 x 2.50	●	○	○	○	○	○	○	○	○	○	○	○	○
3.00 x 3.00	●	●	●	●	●	●	●	●	●	●	●	●	●
3.50 x 3.50	●	○	○	○	○	○	○	○	○	○	○	○	○
4.00 x 4.00	●	●	●	●	●	●	●	●	●	●	●	●	●
4.50 x 4.50	●	○	○	○	○	○	○	○	○	○	○	○	○
5.00 x 5.00	●	●	●	●	●	●	●	●	●	●	●	●	●
5.50 x 5.50	●	○	○	○	○	○	○	○	○	○	○	○	○
6.00 x 6.00	●	●	●	●	●	●	●	●	●	●	●	●	●
6.50 x 6.50	●	○	○	○	○	○	○	○	○	○	○	○	○
7.00 x 7.00	●	○	○	○	○	○	○	○	○	○	○	○	○
7.50 x 7.50	●	○	○	○	○	○	○	○	○	○	○	○	○
8.00 x 8.00	●	○	○	○	○	○	○	○	○	○	○	○	○
10.00 x 10.00	●	○	○	○	○	○	○	○	○	○	○	○	○
12.00 x 12.00	●	○	○	○	○	○	○	○	○	○	○	○	○

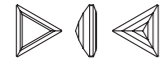
## Packaging and Weight

### Cubic Zirconia

Size	Approx. weight of 100 pcs	Approx. pcs per 1 gram	Packg. unit
MM			PIECES
2.00 x 2.00	1.115	90	200
2.50 x 2.50	2.129	47	200
3.00 x 3.00	3.624	28	100
3.50 x 3.50	5.693	18	100
4.00 x 4.00	8.428	12	80
4.50 x 4.50	11.763	9	50
5.00 x 5.00	16.050	6	50
5.50 x 5.50	21.043	5	50
6.00 x 6.00	27.263	4	35
6.50 x 6.50	34.966	3	35
7.00 x 7.00	43.786	2	20
7.50 x 7.50	53.976	2	20
8.00 x 8.00	65.635	2	20
10.00 x 10.00	128.085	1	10
12.00 x 12.00	221.208	1	10

# Fancy Cuts

## Triangle Step



Size	Synthetic Spinel			
	White	Aquamarine	Medium Blue	Dark Blue
MM				
2.00	●	○	○	○
3.00	●	○	○	○
4.00	●	○	○	○
5.00	●	○	○	○
6.00	●	○	○	○

Additional colors of Cubic Zirconia are produced only upon request. See page 12 for full list of colors.

## Packaging and Weight

### Cubic Zirconia

Size	Approx. weight of 100 pcs	Approx. pcs per 1 gram	Packg. unit
MM			PIECES
2.00	0.506	198	200
3.00	1.607	62	140
4.00	3.682	27	80
5.00	7.038	14	80
6.00	11.810	9	50

### Synthetic Spinel

Size	Approx. wt of 100 pcs	Approx. pcs per 1 gram	Packg. unit
MM			PIECES
2.00	0.309	324	200
3.00	0.981	102	140
4.00	2.247	45	80
5.00	4.294	23	80
6.00	7.206	14	50

### KEY:

- Standard portfolio item
- Item available upon request

## Cushion



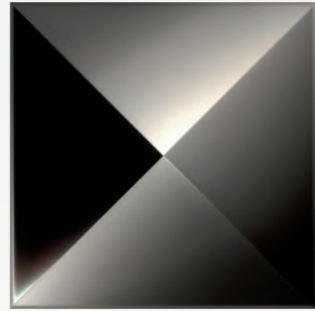
Size	White	Peridot	Pink
	MM		
2.00 × 2.00	●	●	●
3.00 × 3.00	○	○	○
4.00 × 4.00	●	●	●
5.00 × 5.00	○	○	○
6.00 × 6.00	●	●	●

Additional colors of Cubic Zirconia are produced only upon request. See page 12 for full list of colors.

## Packaging and Weight

### Cubic Zirconia

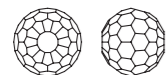
Size	Approx. weight of 100 pcs	Approx. pcs per 1 gram	Packg. unit
MM			PIECES
2.00 × 2.00	1.402	71	200
3.00 × 3.00	4.419	23	100
4.00 × 4.00	10.065	10	80
5.00 × 5.00	18.987	5	70
6.00 × 6.00	32.219	3	40



# Special Cuts

Expect the unexpected. Preciosa's special-cut fine jewelry stones are innovative and contemporary, just like the jewelry and eyewear designs they are meant to inspire.

## Special Cuts



Bead 74  
mm 4.00, 5.00



Marcasite Baguette  
mm 2.20 x 1.20, 2.30 x 1.30, 2.40 x 1.40, 2.50 x 1.50



Marcasite Square  
mm 1.20, 1.30, 1.40, 1.50, 1.60, 1.70, 1.80, 1.90, 2.00, 2.10



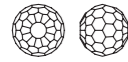
Marcasite Rose  
mm 0.95, 1.05, 1.15, 1.25, 1.33, 1.38, 1.45, 1.55, 1.65, 1.75, 1.85, 1.95, 2.05, 2.15, 2.25





# Special Cuts

## Bead 74



Cubic Zirconia

White

Size	MM
4.00	●
5.00	●

Additional colors of Cubic Zirconia are produced only upon request. See page 12 for full list of colors.

### Packaging and Weight

#### Cubic Zirconia

Size	Approx. weight of 100 pcs	Approx. pcs per 1 gram	Packg. unit
MM	PIECES		
4.00	17.597	6	80
5.00	34.369	3	50

## Marcasite Baguette



Marcasite

Size	MM
2.20 × 1.20	●
2.30 × 1.30	●
2.40 × 1.40	●
2.50 × 1.50	●

### Packaging and Weight

#### Marcasite

Size	Approx. wt of 100 pcs	Approx. pcs per 1 gram	Packg. unit
MM	PIECES		
2.20 × 1.20	0.475	211	1,000
2.30 × 1.30	0.528	189	1,000
2.40 × 1.40	0.598	167	1,000
2.50 × 1.50	0.673	149	1,000

## Marcasite Square



Marcasite

Size	MM
1.20	●
1.30	●
1.40	●
1.50	●
1.60	●
1.70	●
1.80	●
1.90	●
2.00	●
2.10	●

### Packaging and Weight

#### Marcasite

Size	Approx. wt of 100 pcs	Approx. pcs per 1 gram	Packg. unit
MM	PIECES		
1.20	0.332	301	1,000
1.30	0.419	239	1,000
1.40	0.475	211	1,000
1.50	0.532	188	1,000
1.60	0.650	154	1,000
1.70	0.716	140	1,000
1.80	0.859	116	1,000
1.90	0.934	107	1,000
2.00	1.105	91	1,000
2.10	1.190	84	1,000

## Marcasite Rose



Marcasite

Size	MM	PP
0.95	2	●
1.05	3	●
1.15	4	●
1.25	5	●
1.33	6	●
1.38	7	●
1.45	8	●
1.55	9	●
1.65	10	●
1.75	11	●
1.85	12	●
1.95	13	●
2.05	14	●
2.15	15	●
2.25	16	●

### Packaging and Weight

#### Marcasite

Size	Approx. wt of 100 pcs	Approx. pcs per 1 gram	Packg. unit
MM	PP	PIECES	
0.95	2	0.094	1,060
1.05	3	0.130	772
1.15	4	0.152	658
1.25	5	0.200	499
1.33	6	0.251	399
1.38	7	0.297	337
1.45	8	0.325	308
1.55	9	0.380	263
1.65	10	0.449	223
1.75	11	0.494	203
1.85	12	0.538	186
1.95	13	0.649	154
2.05	14	0.699	143
2.15	15	0.747	134
2.25	16	0.888	113



# Flatback Cuts

Timeless, yet trailblazing, Preciosa's flatback-cut fine jewelry stones are especially suited for unconventional jewelry designs and high-end timepieces and eyewear. Each cut boasts a perfectly polished edge and underside for seamless application to traditional precious metals as well as newer materials like acetate.

## Flatback Cuts



Cabochon

mm 1.00, 1.50, 2.00, 2.50, 3.00, 3.50, 4.00, 5.00



Rose Diamond

mm 1.00, 1.50, 2.00, 2.50, 3.00, 3.50, 4.00, 4.50, 5.00, 5.50, 6.00



# Flatback Cuts

**KEY:**

- Standard portfolio item
- Item available upon request

## Cabochon



Size	Cubic Zirconia									Cubic Zirconia			
	White	Black	Peridot	Olive	Gold	Champagne	Brown	Rhodolite	Pink	Orange	Amethyst	Purple	Lavender
MM	PIECES												
1.00	●	●	●	●	●	●	●	●	●	●	●	●	●
1.50	●	●	●	●	●	●	●	●	●	●	●	●	●
2.00	●	●	●	●	●	●	●	●	●	●	●	●	●
2.50	○	○	○	○	○	○	○	○	○	○	○	○	○
3.00	●	●	●	●	●	●	●	●	●	●	●	●	●
3.50	○	○	○	○	○	○	○	○	○	○	○	○	○
4.00	●	●	●	●	●	●	●	●	●	●	●	●	●
5.00	○	○	○	○	○	○	○	○	○	○	○	○	○

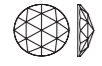
## Packaging and Weight

### Cubic Zirconia

Size	Approx. weight of 100 pcs	Approx. pcs per 1 gram	Packg. unit
MM	PIECES		
1.00	0.155	647	1,000
1.50	0.522	192	1,000
2.00	1.235	81	500
2.50	2.414	41	500
3.00	4.171	24	200
3.50	6.623	15	100
4.00	9.885	10	80
5.00	19.308	5	60

# Flatback Cuts

## Rose Diamond



Cubic Zirconia

White

Size	Availability
1.00	●
1.50	●
2.00	●
2.50	○
3.00	●
3.50	○
4.00	●
4.50	○
5.00	●
5.50	○
6.00	●

Additional colors of Cubic Zirconia are produced only upon request. See page 12 for full list of colors.

**KEY:**

- Standard portfolio item
- Item available upon request

## Packaging and Weight

### Cubic Zirconia

Size	Approx. weight of 100 pcs	Approx. pcs per 1 gram	Packg. unit
			PIECES
1.00	0.103	969	1,000
1.50	0.308	325	1,000
2.00	0.646	155	500
2.50	1.185	84	500
3.00	1.995	50	200
3.50	3.108	32	100
4.00	4.572	22	100
4.50	6.348	16	100
5.00	8.528	12	100
5.50	11.156	9	50
6.00	14.271	7	50

